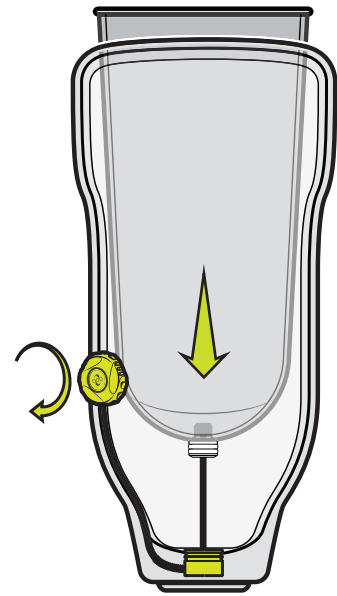




Revised May 2025

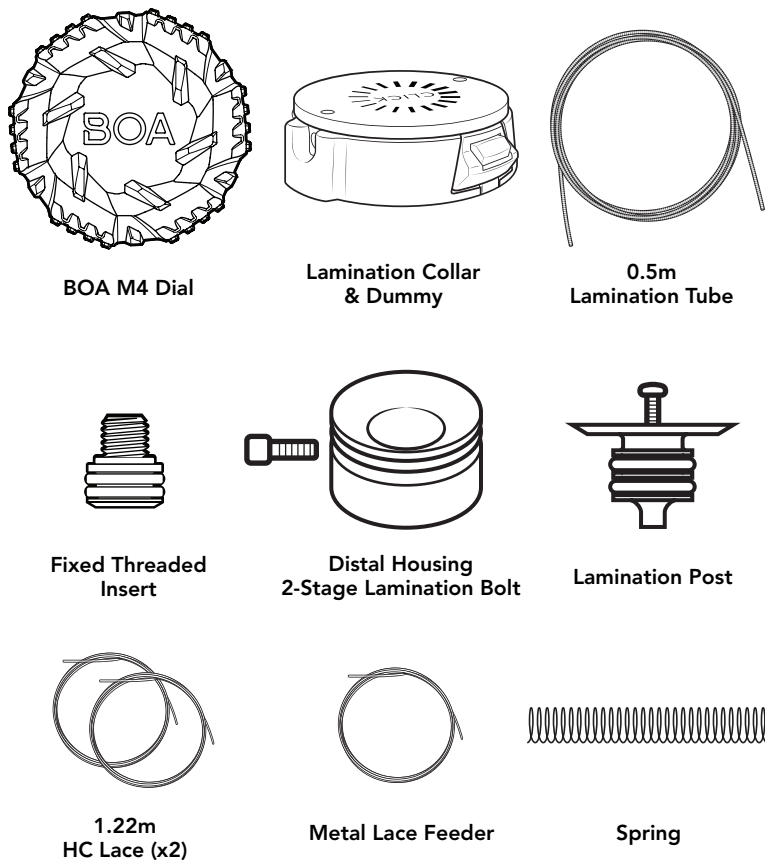
RevoLock®

Lanyard V2 with BOA® Dial RL3000-220



Visit www.clickacademy.co for video education on Click Adjustability and RevoLock operation.

RevoLock Lanyard V2 with BOA® Dial Contents:



Advisories

Must be installed by a licensed professional.

Lace will wear:

- Routinely check for wear or damage.
- Look for broken fibers around areas of high wear.
- Replace lace if a significant amount of fibers are broken.
- Proactively replace lace every 6 months.
- Loss of suspension can occur if lace fails.
- Keep lace away from open flame and sharp edges.

Secure threaded insert to liner with medium thread lock.

Secure snap to threaded insert before tensioning system.

Weight limit: 300lbs/135kg

See instructions in other languages: clickmedical.co/instructions



WARRANTY

U.S. Customers:

Contact www.clickmedical.co/terms/#warranty
Help@ClickMedical.co
Tel: +1-970-670-7012

International Customers:

Please contact your local distributor.

For more resources visit:

clickmedical.co/knowledge-base

UK REP	MDSS-UK RP LIMITED, 6 Wilmslow Road Rusholme, M14 5TP Manchester United Kingdom
CH REP	MDSS CH GmbH, Laurenzenvorstadt 61 5000 Aarau, Switzerland
MD	MDSS GmbH, Schiffgraben 41 30175 Hannover, Germany
EC REP	Click Medical, LLC, 1205 Hilltop Parkway, W101 Steamboat Springs, CO 80487, USA +1-970-670-7012

Click Medical products are patent protected.

For full list: www.clickmedical.co/patents

Fabrication Overview:

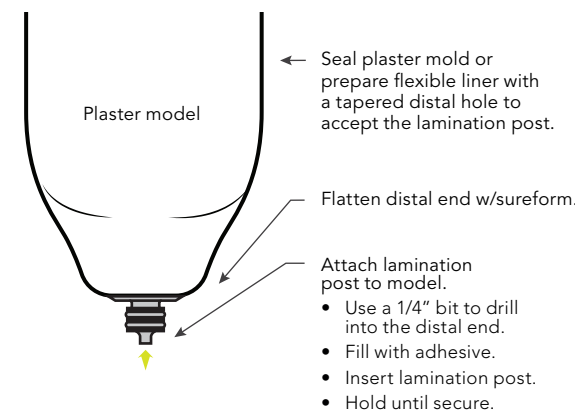
1. Secure lamination post to model.
2. Apply PVA bag and Distal Housing.
3. Apply materials layup.
4. Place Tube and Lamination Collar in desired location.
5. Apply outer fabric layers.
6. Perform 1st lamination.
7. Grind down to expose Lamination Collar and remove Dummy.
8. Remove model.
9. Lace socket.
10. Attach lace to both the Threaded Insert and the BOA® Dial.
11. Install BOA® Dial into collar.
12. Attach threaded insert to liner.
13. Test for function.

To learn more about fabricating RevoLock, enroll in ClickAcademy.co

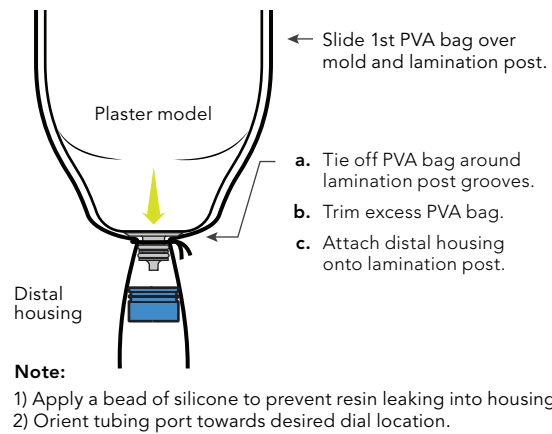
For material suggestions and guidelines,
please refer to the Material Data Sheet: clickmedical.co/mds

Detailed Fabrication Instructions: Single or Two Stage Lamination

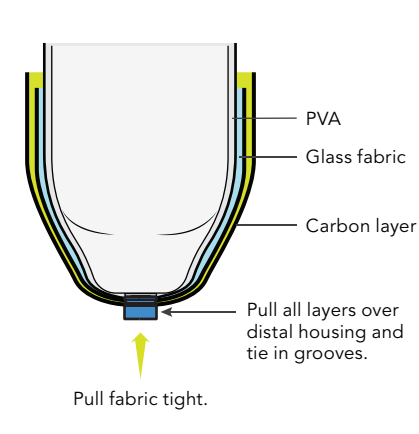
1 Apply attachment post to model.



2 Apply PVA bag.



3 Materials layup.



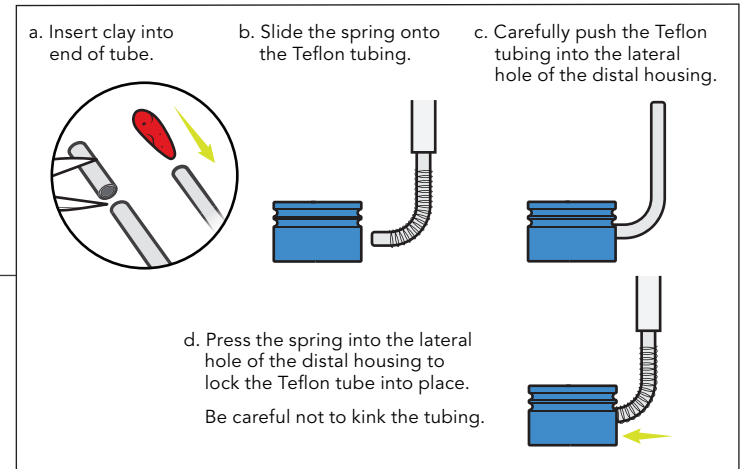
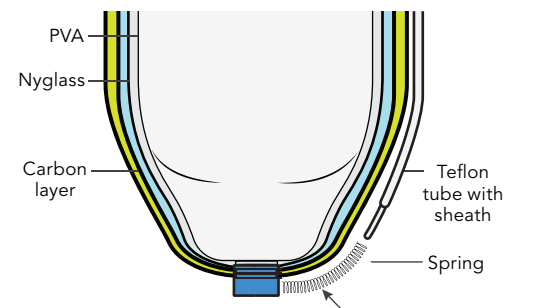
4 Connect spring and tube to distal housing.

Single-Stage Lamination

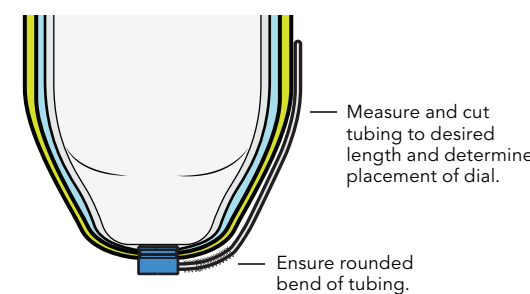
- 1) Insert tubing and spring.
- 2) Laminate with resin.

2-Stage Lamination

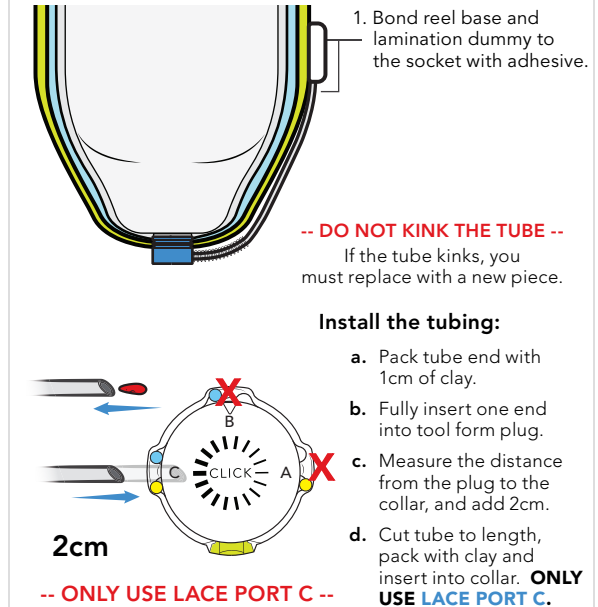
- 1) Insert bolt into distal housing. Add clay to bolt head.
- 2) Laminate with resin.
- 3) Grind down to expose head of bolt, then extract bolt.
- 4) Insert tubing and spring into distal housing.



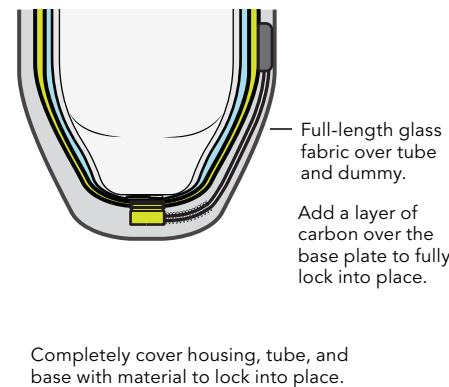
5 Position tube along side of socket.



6 Place dial housing and connect tube.



7 Laminate outer layer.

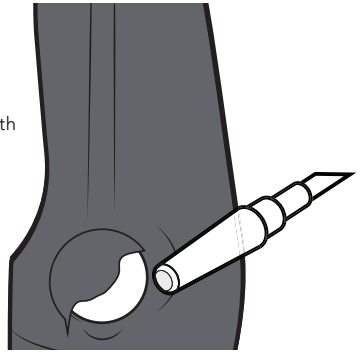


Detailed Fabrication Instructions (continued):

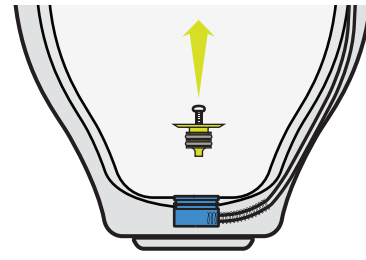
8 After laminating, grind down to expose dummy.

Prepare collar:

- Grind to silicone and remove.
- Continue grinding carbon until flat with top of the collar.
- Trim tube end and clear debris.



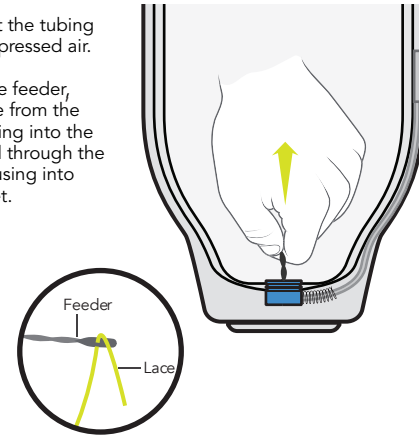
9 Remove model and lamination post.



10 Lace the system.

Clean out the tubing with compressed air.

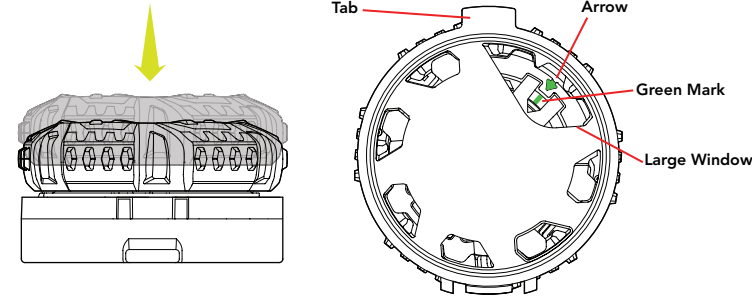
Using lace feeder, route lace from the reel housing into the tube, and through the distal housing into the socket.



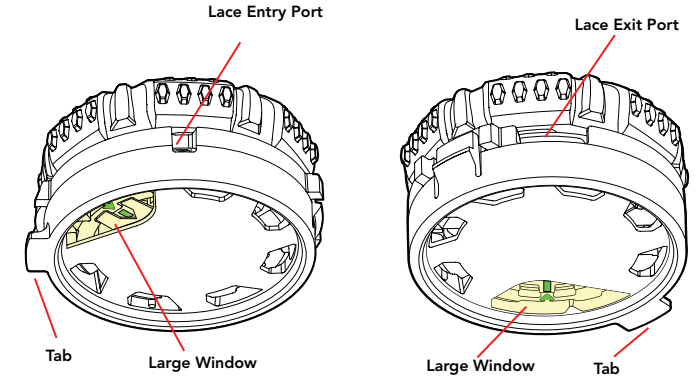
11 Lace the dial.

a. Ready the dial for lacing.

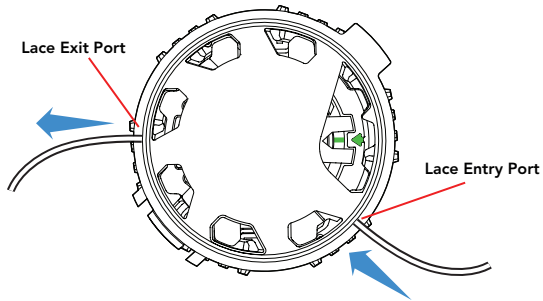
- Ensure dial is engaged by pushing it down.
- Turn dial over and ensure green mark is aligned with arrow. If not, hold base and turn dial until the green mark is aligned.



b. Locate the lacing ports.

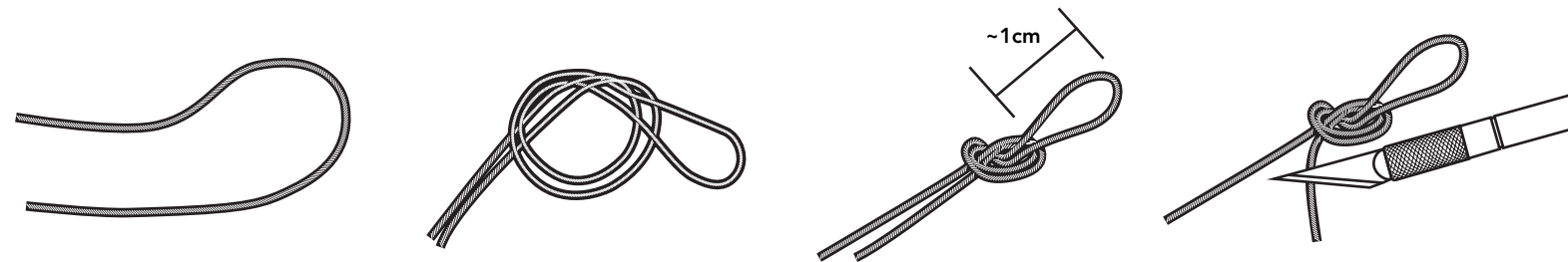


c. Insert lace through the entry port and out the lace exit port on the opposite side of the dial.

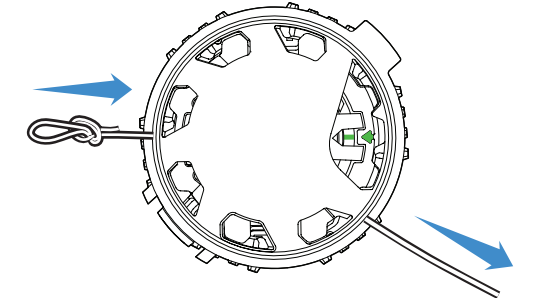


d. Tie lace with an overhand knot.

- Make a loop.
- Tie an overhand knot with the loop.
- Pull knot tight. Knot loop should be approximately 1cm.
- Trim the tail.



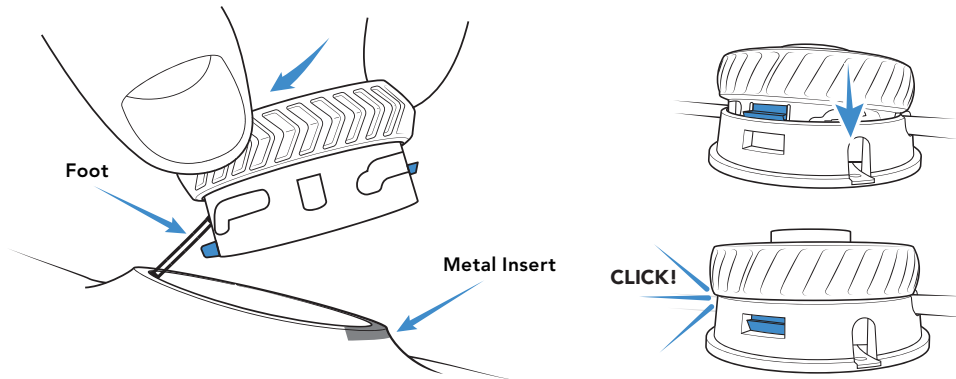
e. Pull loop into dial to seat knot.



12 Install the BOA Dial.

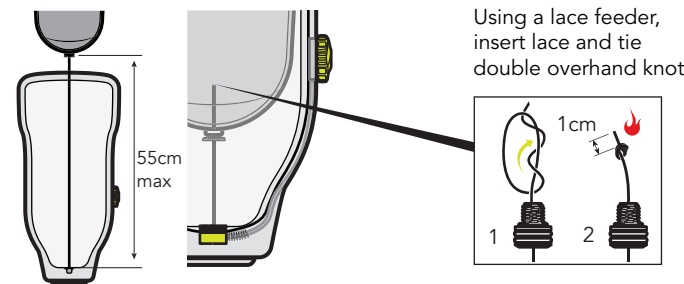
a. Insert the foot of the reel into collar.

b. Press the reel firmly into the collar (you should hear a "CLICK" when secure).



13 Determine Lace Length.

Determine how much lace is needed to extend outside of socket and attach to liner and to the threaded insert.

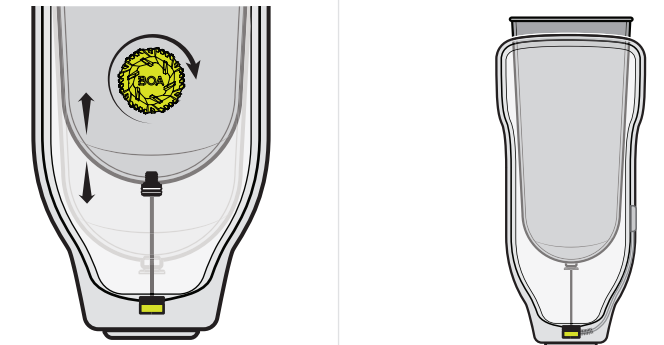


Note: Max lace length cannot exceed 55cm.

14 Test for Function.

- Attach threaded insert to liner.
- Wind up lace.
- Pull dial out to release.
- Pull liner and lace out of socket.
- Wind up lace again.

Note: Inspect lace routinely for signs of fraying or fatigue. Replace lace every 6 months. Keep lace away from open flame.



✓ Congratulations, you are finished!

Regularly inspect your RevoLock system.



Inspect lace:

- ✓ Check for wear or damage routinely
- ✓ Replace at any sign of wear
- ✓ Replace lace every 6 months



This product is waterproof and submersible. Rinse with fresh water after use in saltwater, sand, or mud.