

## Replacement Instructions For:

RP0200-130-05, QuickFit® Dial and Lace Replacement Kit - Black  
 RP0200-130-W, QuickFit® Dial and Lace Replacement Kit - White



For help and video instructions: [clickmedical.co/quickfit-lacer](https://clickmedical.co/quickfit-lacer)

## Replacement Kit Contents:



1x Replacement Steel Lace, 1.5m



1x Replacement BOA® Reel

### Compatible with:

QFL-130-B-2, QuickFit® Lacer - Black 2-Pack  
 QFL-130-W-2, QuickFit® Lacer - White 2-Pack



### Advisory

Must be installed by a trained professional.  
 Lace will wear. At minimum, inspect monthly.  
 Overtightening could reduce circulation.  
 Do not use on patients with nerve issues.  
 Keep lace away from sharp edges.  
 See advisories in other languages: [clickmedical.co/advisories](https://clickmedical.co/advisories)



### WARRANTY:

[www.clickmedical.co/terms/#warranty](https://www.clickmedical.co/terms/#warranty)

### U.S. Customers:

Contact Click Medical directly  
 Help@ClickMedical.co  
 Help Line: +1 970 670 7012

### International Customers:

Please contact your local distributor

**UK REP**

Parkway House, Palatine Rd, Northenden,  
 Wythenshawe, Manchester M22 4DB  
 United Kingdom

**CH REP**

MDSS CH GmbH, Laurenzenvorstadt 61  
 5000 Aarau, Switzerland

**MD**

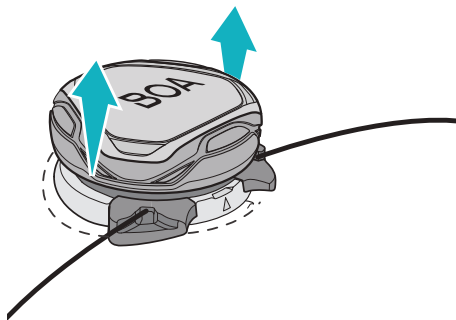
MDSS GmbH, Schiffgraben 41  
 30175 Hannover, Germany

**EC REP**

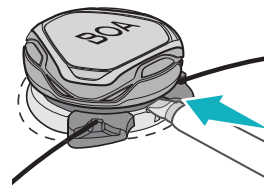


Click Medical, LLC, 1205 Hilltop Parkway, W101  
 Steamboat Springs, CO 80487, USA +1-970-670-7012

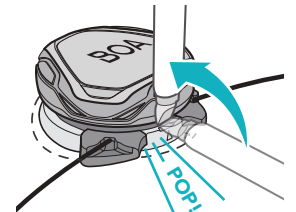
- 1 Pull reel open to release tension.



- 2 a. Insert flat-head screwdriver into the tab with an arrow indicator.

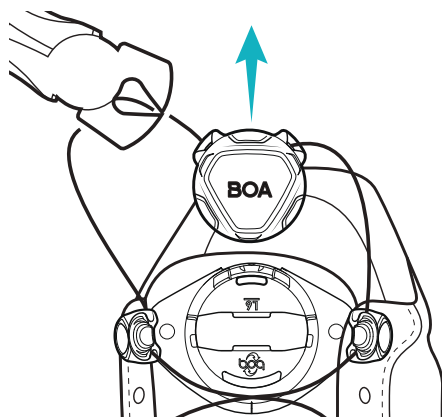


- b. Use tool to pry reel upward until cartridge pops out of bayonet.

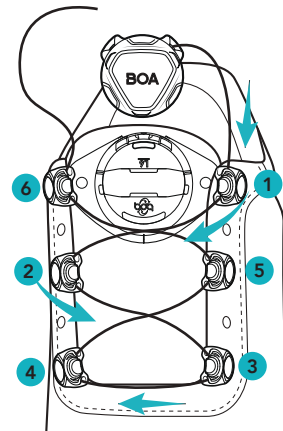


Note: Tab is located on top of mounting plate between the lace ports.

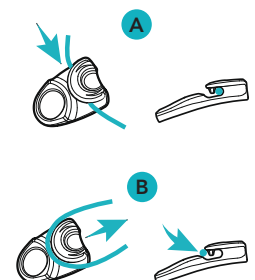
- 3 Snip lace to remove old reel and lace from the system.



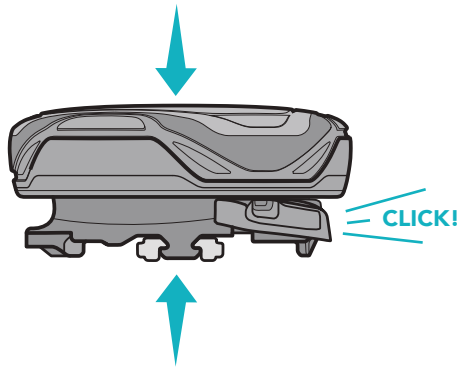
- 4 Lace the Guides as shown.



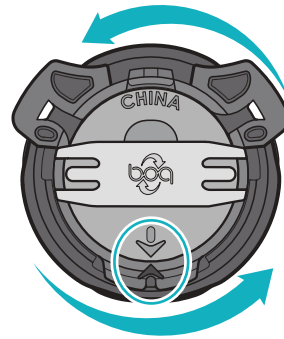
Lace can be fed straight through the Guide (A) or pulled into place (B). Lace can be snapped out of guide for quick donning or doffing.



- 5 Take new reel and press down to close it.

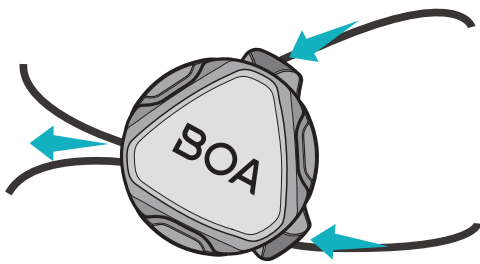


- 6 Turn until the two arrows on the back of the reel align.

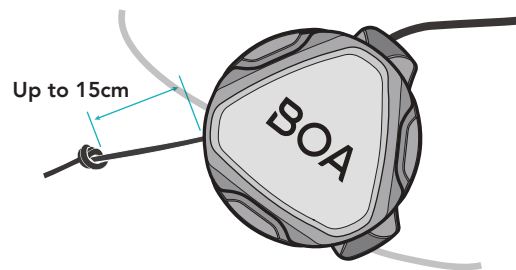


- 7 Attach lace to reel:

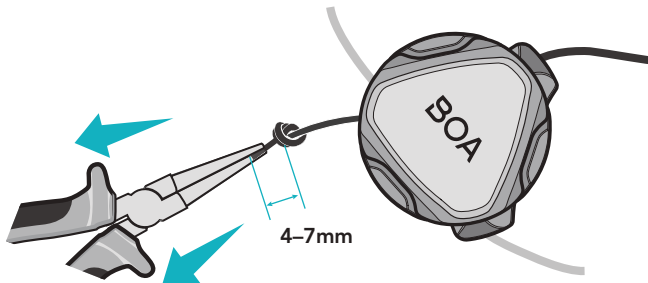
- a) Feed right lace through right lace port.



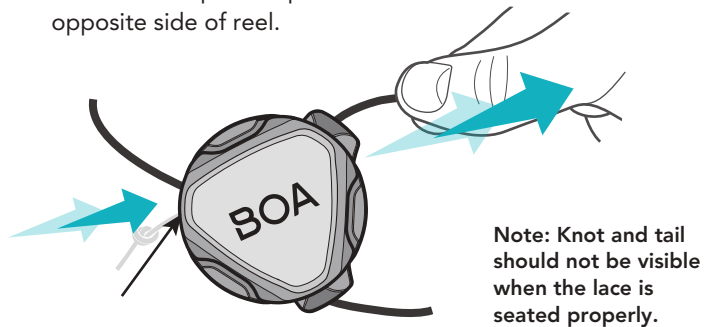
- b) Determine lace length needed. Leave a maximum of 15cm of lace capacity per lace port.



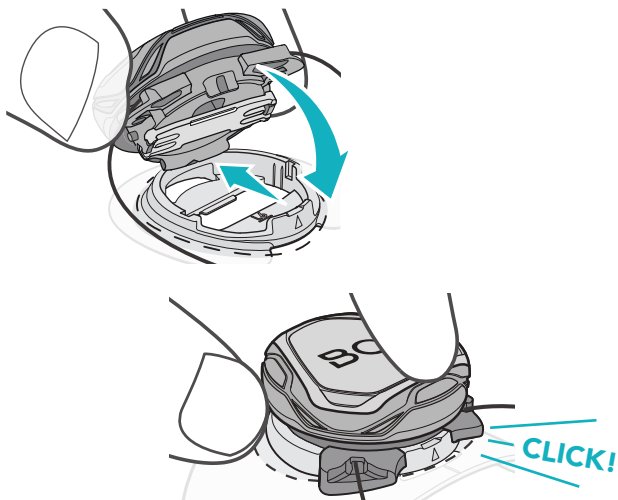
- c) Tie off with a single overhand knot. Cut tail to 4-7mm past knot.



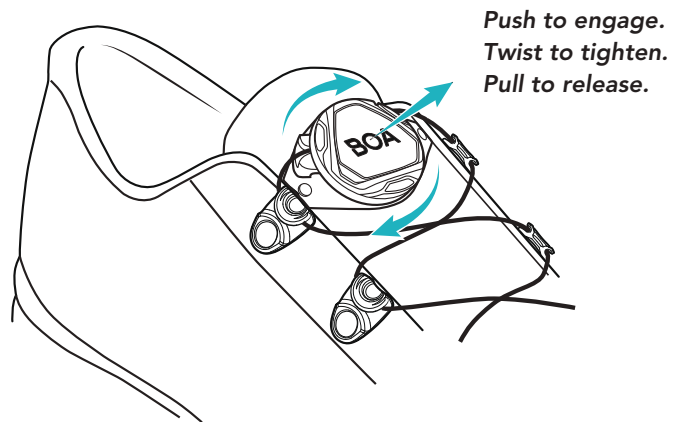
- d) Pull knot into port. Repeat for opposite side of reel.



- 8 Snap reel fully into the mounting plate.



- 9 Cycle system to test for smooth function:



Note: If system feels rough, remove reel (see steps 1-2) and check that knot and tail are seated properly (see step 7).