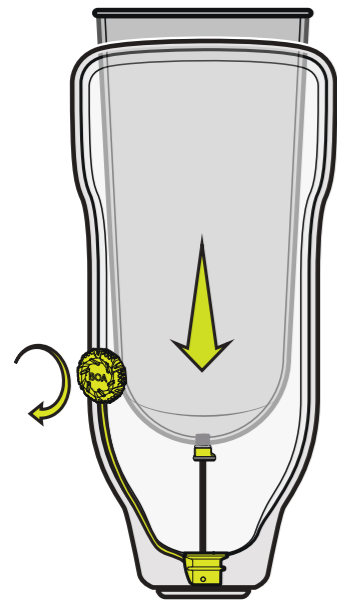




Revised Date JUL 2025

RevoLock®

Lanyard V3 with BOA® Dial
RL-302-22-01

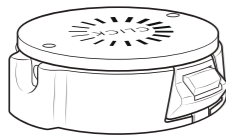


Visit www.clickacademy.co for video education on Click Adjustability and RevoLock operation.

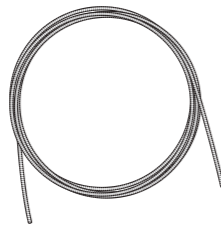
RevoLock® Lanyard V3 with BOA® Dial Contents



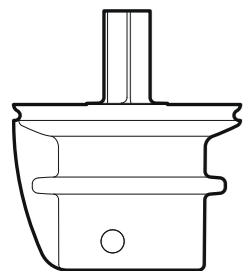
BOA® M4 Dial



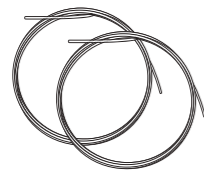
Lamination Collar & Dummy



0.5m Lamination Tube



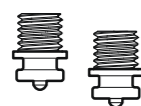
Distal Housing & Lamination Post



1.22m HC Lace (x2)



Metal Lace Feeder



Threaded Insert (x2)



Snap



Advisories

Must be installed by a licensed professional.

Lace will wear:

- Routinely check for wear or damage.
- Look for broken fibers around areas of high wear.
- Replace lace if a significant amount of fibers are broken.
- Proactively replace lace every 6 months.
- Loss of suspension can occur if lace fails.
- Keep lace away from open flame and sharp edges.

Secure threaded insert to liner with medium strength thread lock.

Secure snap to threaded insert before tensioning system.

Weight limit: 220lbs/100kg

See instructions in other languages: clickmedical.co/instructions



WARRANTY

U.S. Customers:

Contact www.clickmedical.co/terms/#warranty

Help@ClickMedical.co

Tel: +1-970-670-7012

International Customers:

Please contact your local distributor

For more resources visit:

clickmedical.co/knowledge-base

UK REP	Parkway House, Palatine Rd, Northenden, Wythenshawe, Manchester M22 4DB United Kingdom
CH REP	MDSS CH GmbH, Laurenzenvorstadt 61 5000 Aarau, Switzerland
MD	MDSS GmbH, Schiffgraben 41 30175 Hannover, Germany
EC REP	Click Medical, LLC, 1205 Hilltop Parkway, W101 Steamboat Springs, CO 80487, USA +1-970-670-7012

Click Medical products are patent protected.

For full list: clickmedical.co/patents

Fabrication Overview:

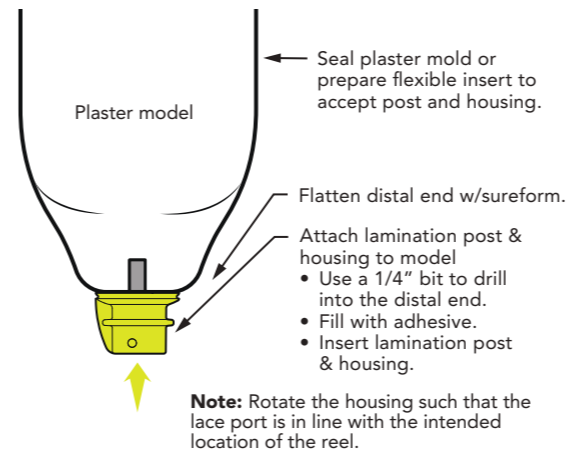
1. Secure lamination post and housing to model.
2. Apply PVA bag and tie into housing.
3. Apply materials layup.
4. Place Tube and Lamination Collar in desired location.
5. Apply outer fabric layers.
6. Perform lamination.
7. Grind down to expose Lamination Collar and remove Dummy.
8. Remove model.
9. Lace socket.
10. Attach lace to both the Snap and the BOA® dial.
11. Install the BOA® dial into the Lamination Collar.
12. Attach the Threaded Insert to the liner.
13. Test for function.

To learn more about fabricating RevoLock, enroll in ClickAcademy.co

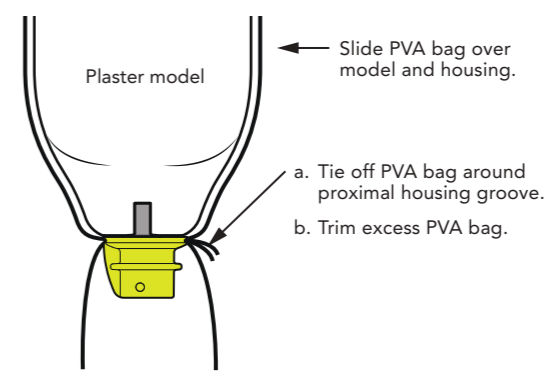
For material suggestions and guidelines, please refer to the Material Data Sheet: clickmedical.co/mds

Detailed Fabrication Instructions: Single Stage Lamination

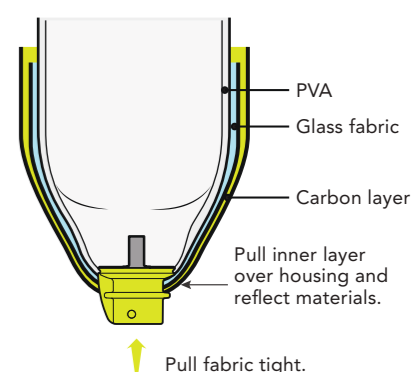
1 Apply lamination post and distal housing to model.



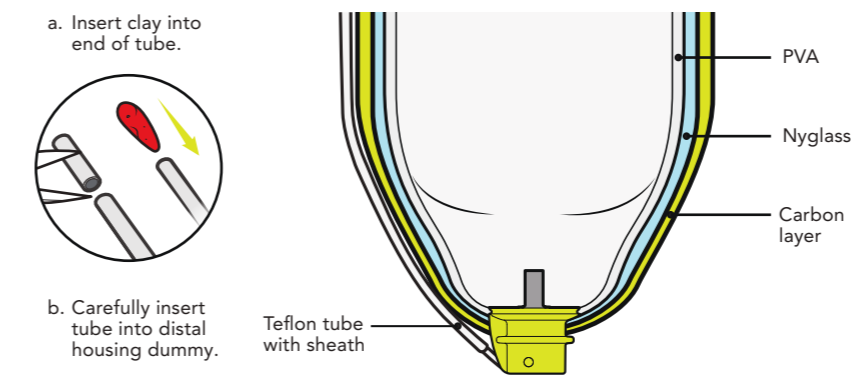
2 Apply PVA bag.



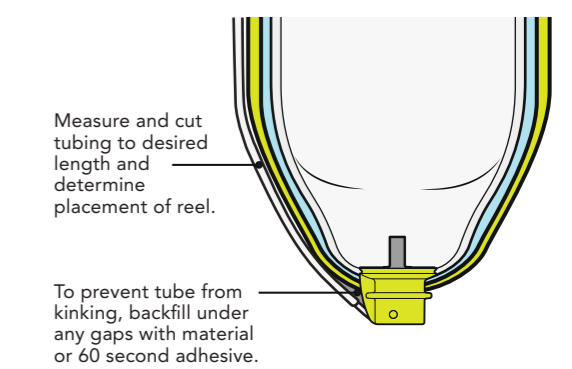
3 Materials layup.



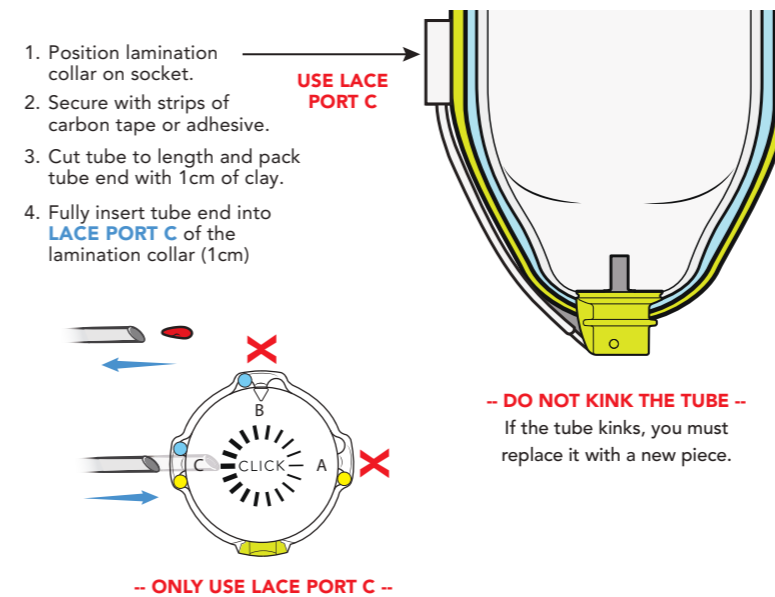
4 Add material layup and install tubing.



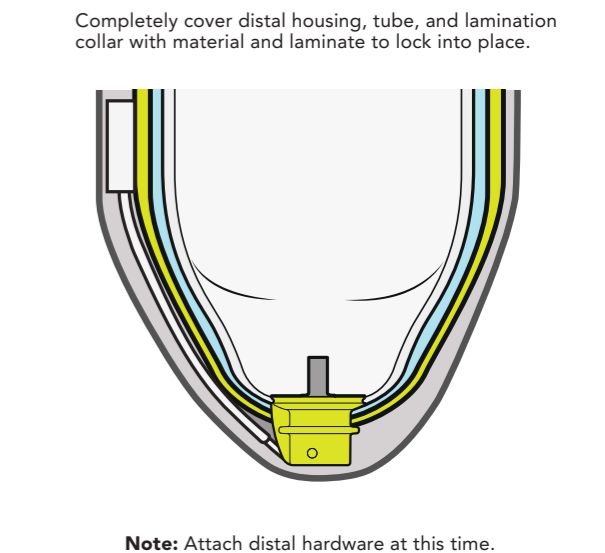
5 Position tube along side of socket.



6 Place lamination collar and connect tube.



7 Laminate outer layer.

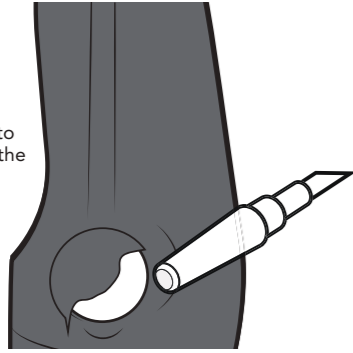


Detailed Fabrication Instructions (continued):

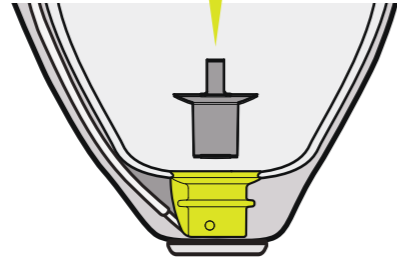
8 After laminating, grind down to expose lamination collar.

Prepare collar:

1. Grind and remove silicone dummy.
2. After silicone is removed, continue to grind until flat with the top of the collar.
3. Trim tube end and clear debris.

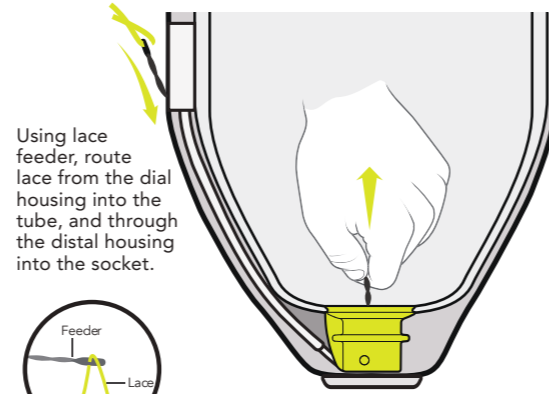


9 Remove model and lamination post.



Note: Silicone dummy must be removed to provide air flow through the tube when removing the lamination post.

10 Lace the device.

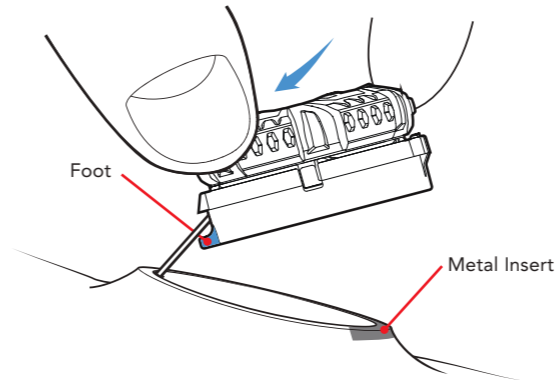


Using lace feeder, route lace from the dial housing into the tube, and through the distal housing into the socket.

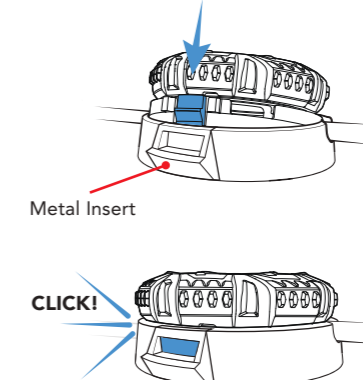
Pro Tip: Put a small bend in the end of lace feeder to deflect feeder into socket cavity.

12 Install the BOA® Dial.

a. Insert the foot of the dial into collar.

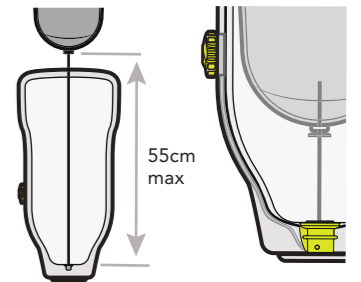


b. Press the dial firmly into the collar (there will be a "CLICK" when secure).



13 Determine Lace Length.

Determine how much lace is needed to extend outside of the socket and attach to the liner and to the threaded insert.



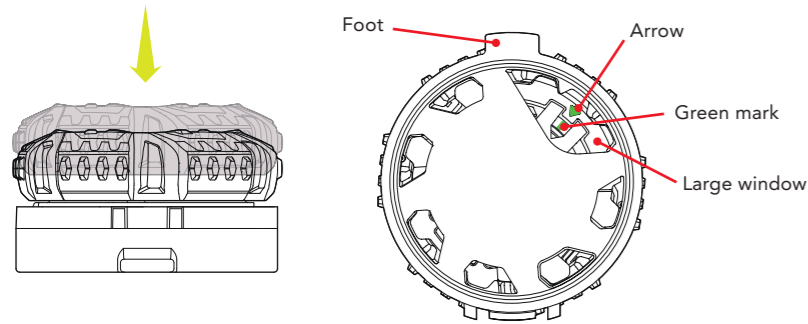
Note: Max lace length cannot exceed 55cm.

11 Lace the dial.

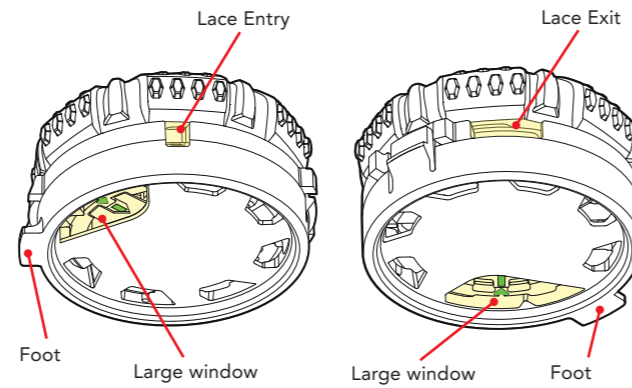
a. Ready the dial for lacing.

1 Ensure dial is engaged by pushing it down.

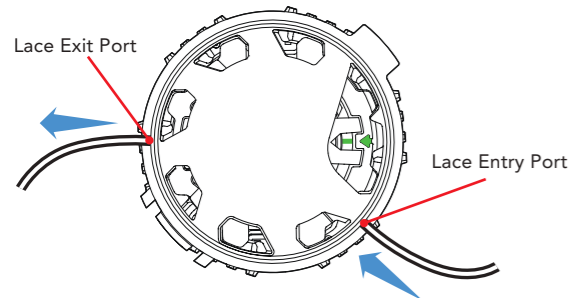
2 Turn dial over and ensure green mark is aligned with arrow. If not, hold base and turn dial until the green mark is aligned.



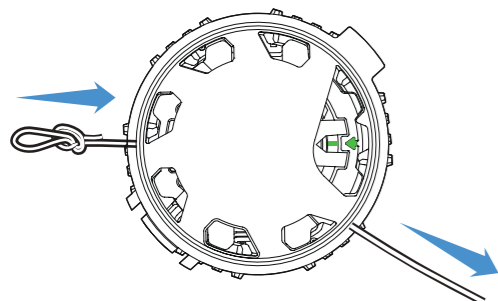
b. Locate the lacing ports



c. Insert lace through the entry port and out the lace exit port on the opposite side of the reel.

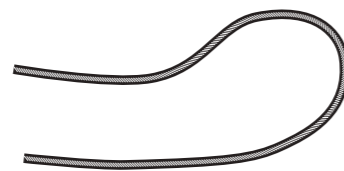


e. Pull loop in the reel to seat knot.

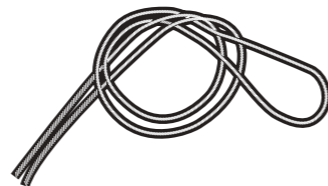


d. Tie lace with an overhand knot.

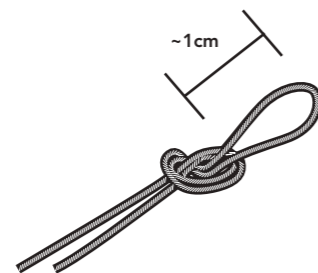
1 Make a loop.



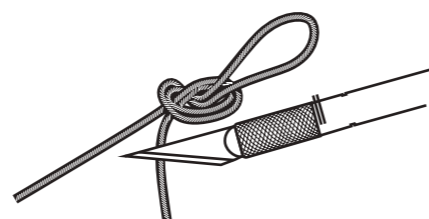
2 Tie an overhand knot with the loop.



3 Pull knot tight. Knot loop should be approximately 1cm.

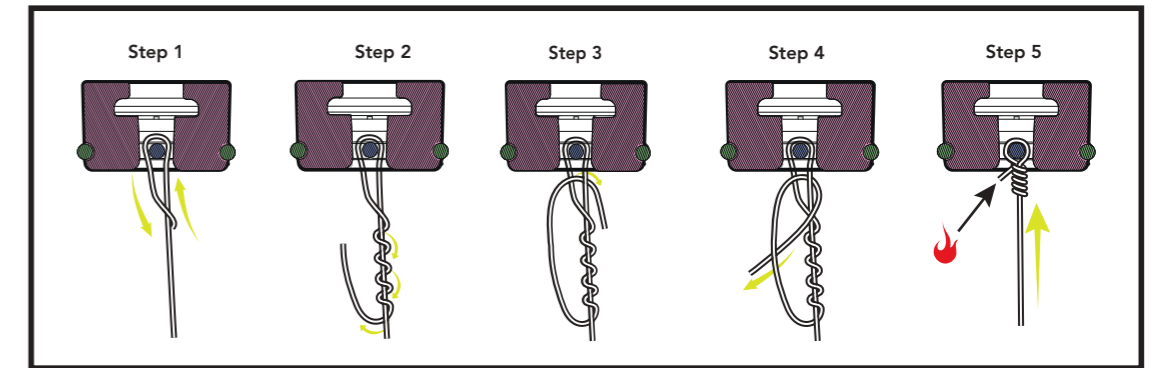


4 Trim the tail.



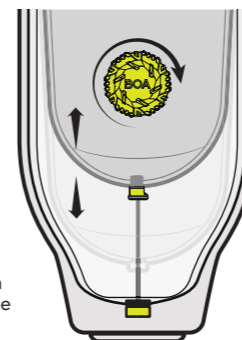
14 Attach the snap.

Using a lace feeder, insert lace and tie single fisherman's knot. Lightly burn the end of the knot to ensure it does not slip.



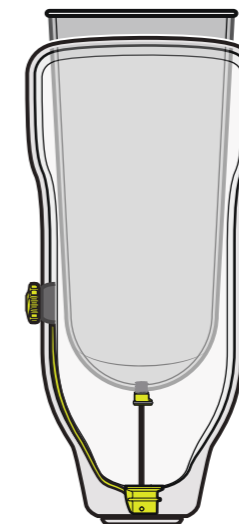
15 Test for function.

- Attach threaded insert to liner.
- Attach threaded insert to snap.
- Turn dial clockwise to take up lace.
- Pull dial out to release the lace.
- Pull liner and lace out of socket.
- Push dial in and turn dial clockwise to take up lace again.



Pro Tip: Ensure lace release is easy and smooth. If not, remove dial from collar, check for debris and reinstall the dial into the collar.

Congratulations, you are finished!



Regularly inspect your RevoLock system.



Inspect lace:

- ✓ Check for wear or damage routinely.
- ✓ Replace lace at any sign of wear.
- ✓ Replace lace every 6 months.



This product is waterproof and submersible. Rinse with fresh water after use in saltwater, sand, or mud.