



Patient Instructions For Use

Revised Date May 2025

Deliver It

When delivering your device made with a Click Medical[®] kit and with a patient present, scan the *Instructions For Use* Hangtag.

Please review with your patient how to use the Click[®] Reel and to care for and maintain their systems. Additionally those using RevoLock[®], please review how to use the Slider and the Quick Connect Snap.



The Click Dial

The Click Dial has two modes of operation

- Fast Wind or Full Release Mode = Silent (smooth)
- High Power Mode = "Clicking" (tactile)



Patient Instructions For Use

How to operate the Click® Dial

- Turn the dial clockwise to take up slack lace.
- Once you hear the “clicking” sound, the dial has begun to hold tension. It does not hold tension until it starts clicking.
- Keep turning to create desired tension. You can micro-adjust forward and backward as needed.

To fully release the tension:

- Turn the dial counter-clockwise until the “clicking” stops
- Tension will be released and you will be able to fully expand your device

- 1 Turn reel clockwise to quickly take up lace.



**Fast Wind or Full Release
Mode = Silent (Smooth)**

- 2 Reel will automatically shift to high power mode as it tightens.



**Power Mode =
“Clicking” (Tactile)**

- 3 Micro-adjust by turning forward or backward.



Pro Tip: If you prefer the reel to operate ONLY in Power Mode for constant micro-adjustment, replace the lock plug to “disable” the Shift function.

- 4 To fully release, unwind counterclockwise until “clicking” stops.



Regularly inspect your system.



Inspect lace:

- ✓ Check for wear or damage routinely
- ✓ Replace at any sign of wear
- ✓ Replace lace every 6 months

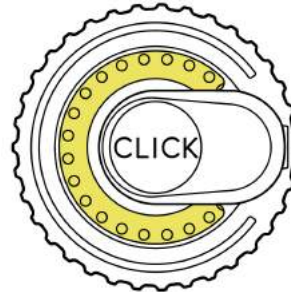


This product is waterproof and submersible. Rinse with fresh water after use in saltwater, sand, or mud.



Patient Instructions For Use

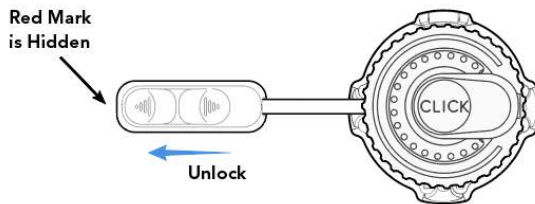
If you rinse the dial, please add a drop of household oil (think 4 in 1, WD or even bike chain lubricant). Put a small drop of clear thin oil in the "C" shape of the dial (highlighted in yellow), turn the dial both forward and backward to distribute the oil. This will ensure the dial operates smoothly.



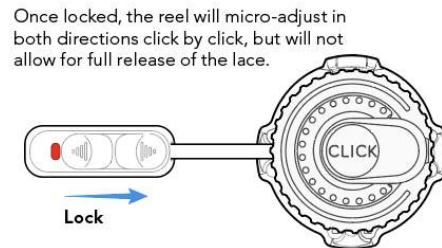
For RevoLock Kit Users

How to use the Slider:

- 1 Push out, Slider is **unlocked**.
 - Allows for the standard function of the Reel with full release of the lace.



- 2
 - Turn the dial clockwise until the limb is completely pulled into the socket.
 - Then lock the Slider by pushing it towards the reel, until the red mark appears.



Once locked, the reel will micro-adjust in both directions click by click, but will not allow for full release of the lace.

How to operate the Snap to connect the liner:

